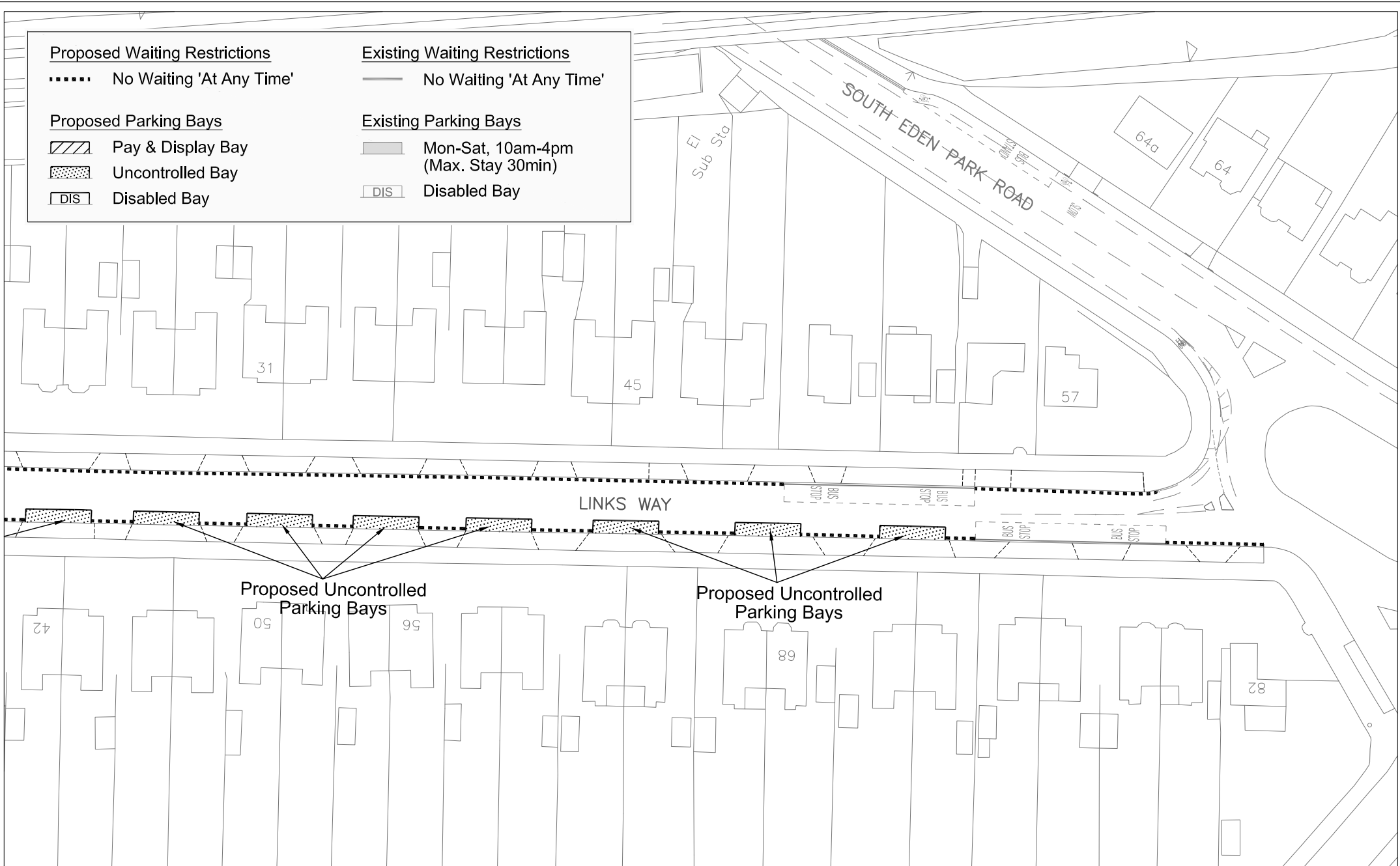


<b>Proposed Waiting Restrictions</b>		<b>Existing Waiting Restrictions</b>	
.....	No Waiting 'At Any Time'	—	No Waiting 'At Any Time'
<b>Proposed Parking Bays</b>		<b>Existing Parking Bays</b>	
	Pay & Display Bay		Mon-Sat, 10am-4pm (Max. Stay 30min)
	Uncontrolled Bay		Disabled Bay
	Disabled Bay		



This map is reproduced from Ordnance Survey material with the permission of Ordnance Survey on behalf of the Controller of Her Majesty's Stationery Office Crown copyright. Unauthorised reproduction infringes Crown copyright and may lead to prosecution or civil proceedings. London Borough of Bromley Licence Number 100017661.

G. Hayward BSc, MICE, MStructE  
 Director of Environment & Leisure Services



Environment & Leisure Services  
 Civic Centre, Stockwell Close,  
 Bromley, Kent, BR1 3UH  
 Tel : (020) 8464 - 3333

## Upper Elmers End Road/Links Way, Beckenham

### PROPOSED PARKING BAYS & WAITING RESTRICTIONS (2 of 2)

	Scale:	1:750 @ A4
	Date:	11/09/07
	Dwg. No.:	ESD/10204/1
	Drawn By:	ST