



Bromley & Croydon Women's Aid

Support • Refuge • Awareness

BCWA in 2 minutes:



<https://www.youtube.com/watch?v=XpyD7p3NisE>

Domestic Abuse Facts

- ▶ **1 in 4** women suffer from domestic abuse in the UK.
- ▶ **1 in 5** children are exposed to domestic abuse.
- ▶ **2** women are killed by a partner or ex-partner in the UK every week.
- ▶ **76,000** incidents of domestic violence reported in one year in London.
- ▶ **£16** bln per year the cost of domestic abuse to our society.
- ▶ **£2** bln per year the cost of domestic abuse for the NHS.

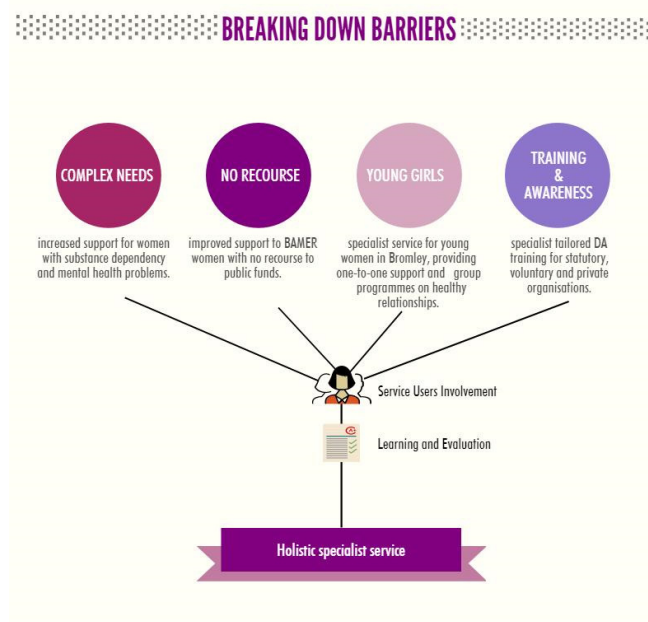
SOS save refuges,
save lives

BCWA in numbers:

- ▶ **315** attended One Stop Shop in 2015/16
- ▶ **118** women & **97** children in refuge in 2015/16
- ▶ **321** women supported by Outreach Services
- ▶ **207** women booked in DA support groups
- ▶ **16** schools delivered Healthy Relationships Programme
- ▶ **2,500** children seen in primary schools
- ▶ **41** years of work in Bromley

BCWA Services:

- ▶ Refuge Accommodation & Support
- ▶ Child Support Services
- ▶ Schools Programme
- ▶ Community Outreach Support
- ▶ Domestic Abuse One Stop Shop
- ▶ Support Groups
- ▶ Awareness & Training



New services in 2016

Funding:

- ▶ Rental Income
- ▶ Big Lottery Fund
- ▶ London Borough of Bromley
- ▶ DCLG
- ▶ MOPAC
- ▶ BBC Children in Need
- ▶ Trusts and Foundations
- ▶ Community groups
- ▶ Churches
- ▶ Local businesses



Accommodation Services

BCWA run 7 refuges throughout the borough. Our refuges are available for women, with or without children.

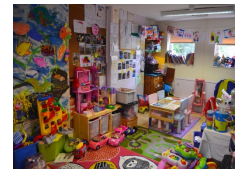
- ▶ We currently have 42 spaces for women & up to 60 children
- ▶ 5 of our refuges offer communal living with private bedrooms & shared lounge/dining areas, kitchens, bathrooms & gardens.
- ▶ 2 communal refuges have playrooms staffed by child support officers
- ▶ 2 refuges provide self contained flats for clients with lower support needs





Refuge Life

- ▶ Women and their children are given a bedroom to share as a family
- ▶ Families stay in refuges for an average of 6 months
- ▶ Kitchens, bathrooms, living and dining rooms are shared between all residents in the refuge.
- ▶ Between 5 and 7 families share a refuge. Most of these are large family homes with child friendly gardens
- ▶ 2 of the refuges have playrooms where Child Support Officers run play sessions & after school clubs for the children.



Refuge Life

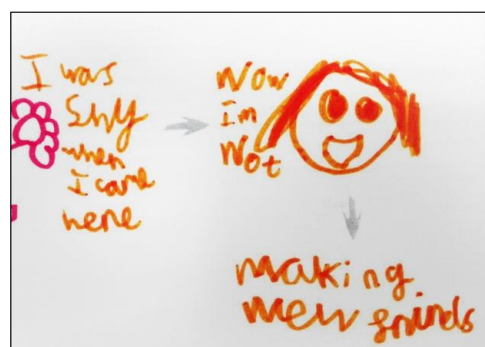
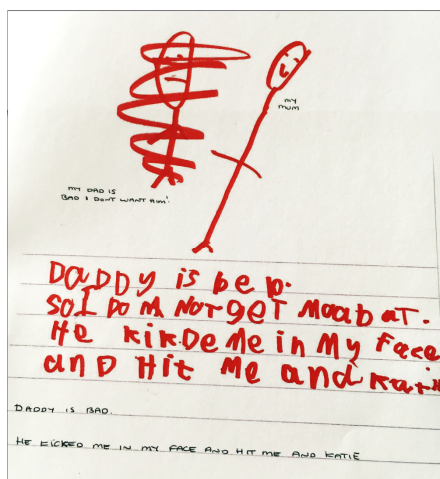
- ▶ We encourage women to make their own decisions with the advice & options available to them.
- ▶ Each woman creates their own support plan reviewed with their refuge officer
- ▶ BCWA believes in empowering women to take control of their lives and contribute positively to the wider community



Child Support Services

- ▶ BCWA Children Support Staff help children make the difficult transition to refuge life.
- ▶ Children in refuge will not be able to have friends over, usually have to change school and will now be sharing a bed room with their mum and siblings.
- ▶ Activities and school holiday outings are arranged to help build children's confidence and self esteem.
- ▶ These services have a vital role in helping women & their children adapt to their changing circumstances and re-location.

We are fortunate to have funding from Children in Need for our support staff, but rely on donations to organise trips and activities which are an invaluable part of the children's support.



HEALTHY RELATIONSHIPS PROGRAMME



- ▶ BCWA delivers a 'healthy relationship' programme in primary schools for children in year 3–6 within the Bromley Borough.
- ▶ Since the start of the programme we have seen approximately 3000 children.
- ▶ Prevention & early intervention has been identified as one of the key measures to combat and prevent Domestic Abuse.
- ▶ The programme is delivered in a one hour session in the children's classroom in a familiar and comfortable surrounding with their teacher present. During the hour we use an animated DVD, presentations and games to teach the children in a fun way.
- ▶ Any children disclosing domestic abuse during the session are flagged up to the school's safeguarding lead.

Helping Hands Group



- ▶ "Helping Hands" consists of small support groups for children who have disclosed abuse within their families taking place in the children's schools.
- ▶ The programme addresses safe relationships in a child-friendly way: no mention of words such as abuse or violence.
- ▶ A teacher reported: "we have seen a remarkable turnaround with behaviour, attendance, attainment and self-esteem. A 5 years old had experienced some horrific life events and would become rude and violent. Since attending the group sessions he is no longer violent, he is able to verbally express his needs and he has been no cause of concern or incidents".

Community Outreach Support

BCWA provide emotional & practical one to one intensive support for women & men who need advice & information.

The Outreach Team provide:

- ▶ A listening ear & we are non-judgemental
- ▶ Support to women & men in the community
- ▶ Advocacy at child protection conferences, court & MARAC
- ▶ Referral to accommodation in our or other refuges as appropriate
- ▶ Help accessing social assistance & signpost to other support services
- ▶ Specialist young people's service including One to One support and group work
- ▶ Training and education including awareness talks to schools, businesses and community groups as well as half and full day training



One Stop Shop

BCWA co-ordinate the Bromley Domestic Abuse One Stop Shop. This takes place every Thursday and is attended by:

- Bromley & Croydon Women's Aid
- Solicitors
- Police
- Bromley Victim Support
- Housing

. . . . who all give FREE & confidential advice on anything to with domestic abuse to women & men.



Support Groups

- ▶ BCWA run 12 support groups throughout the year in three locations across the Bromley Borough.
- ▶ The support groups are based on the Freedom Programme/Keys to Freedom, a 12 week course, run in weekly 2 hour session, which aim to give a broad overview of the psychological & emotional effects for women & their children who have lived with domestic abuse in any of it's forms.
- ▶ The support groups build self esteem and confidence and help to steer away from abusive relationships in the future.
- ▶ The program is an excellent tool for unravelling the confusion that many women feel because of their experiences.

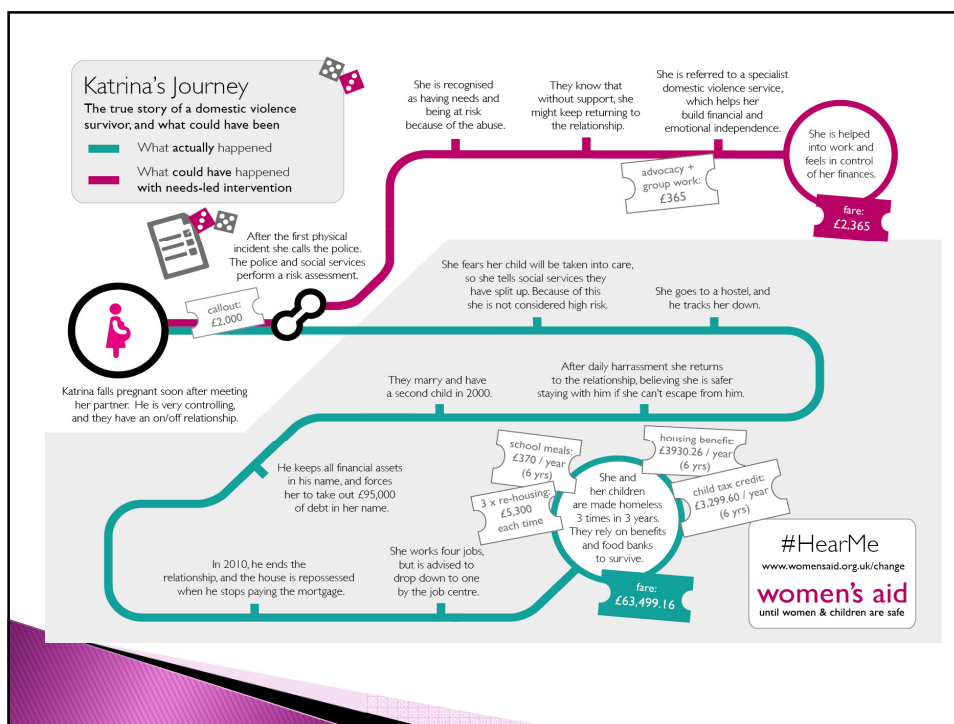
Financial Cost of Domestic Abuse

Domestic Abuse has a financial impact on all members of the community, through:

- Criminal Justice System
- Healthcare
- Social Services
- Housing & Refuge Services
- Civil Legal Costs

It is clear that there are huge financial implications for society as a whole in addition to the personal human cost of Domestic Abuse. These together send a compelling argument for a concerted effort from all partnerships towards support & prevention.

By investing in domestic abuse services, the financial burden on the community can be reduced considerably in the future.



Thank you
for your attention!

www.bcwa.org.uk

[@BromleyWA](https://twitter.com/BromleyWA)

[@bromleycroydonwomensaid](https://www.facebook.com/bromleycroydonwomensaid)

**Bromley
& Croydon
Women's Aid**

Working to end domestic abuse