

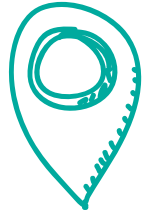
# Special educational needs and/or disabilities (SEND):

## Strategic Vision and Priorities for 2019 to 2022

**Our Journey to Excellence**

We want our children and young people to have their needs met locally, as far as possible, so they can grow up alongside their peers and so they are able to live, learn and work in their local community

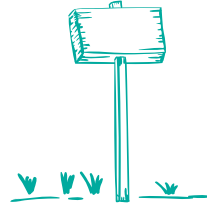
To achieve this, we will make sure that...



...the right provision is available for children and young people who have SEND at the right time, accessing universal and targeted services

### WE WILL FOCUS ON...

- 1. Improving outcomes for children and young people at SEN support in education settings
- 2. Improving outcomes for children and young people at SEN Support level in the home/community
- 3. Improving the health and wellbeing for all children and young people at SEN Support level



...there is good local specialist provision and support for children and young people who have SEND

### WE WILL FOCUS ON...

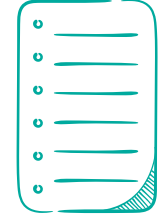
- 1. Improving outcomes for children and young people with complex needs in an educational setting
- 2. Improving outcomes for children and young people who have complex needs accessing specialist services in the home and community
- 3. Improving the health and wellbeing for children and young people who have complex needs accessing specialist provision



...we have consistent, transparent, timely and co-ordinated services across education, health and care

### WE WILL FOCUS ON...

- 1. Implementing a robust quality assurance process in place that demonstrates improving practice across education, health and care
- 2. Making sure we have robust, multi-agency decision making is in place, which is clear and transparent for families and practitioners
- 3. Making sure our SEN statutory assessment processes are robust, with underpinning guidance and paperwork that provides consistency, clarity and high quality Education, Health and Care (EHC) Plans
- 4. Aligning our multi-agency processes across education, health and care



...we are delivering effective co-ordination of services for children and young people aged from 0 to 25 who have SEND

### WE WILL FOCUS ON...

- 1. Training across the local area to improve knowledge, understanding and working practices
- 2. The realignment of services to reflect a SEND service from 0 to 25 years
- 3. Monitoring of the wider SEND Projects
- 4. Using our robust data across the 0 to 25 years age range effectively to improve services
- 5. Improving our processes, procedures and working practices across services



...we are effectively engaging with children and young people who have SEND, and their families

### WE WILL FOCUS ON...

- 1. Improving communication with children and young people and their parent and carers
- 2. Making sure that parents and carers are an integral part of discussions and decisions regarding individual support
- 3. Making sure that young people, and their parents and carers, are an integral part of commissioning of services
- 4. Increasing the voice of children and young people who have SEND
- 5. Monitoring and accountability of engagement



Delivering the Bromley LOCAL OFFER.

