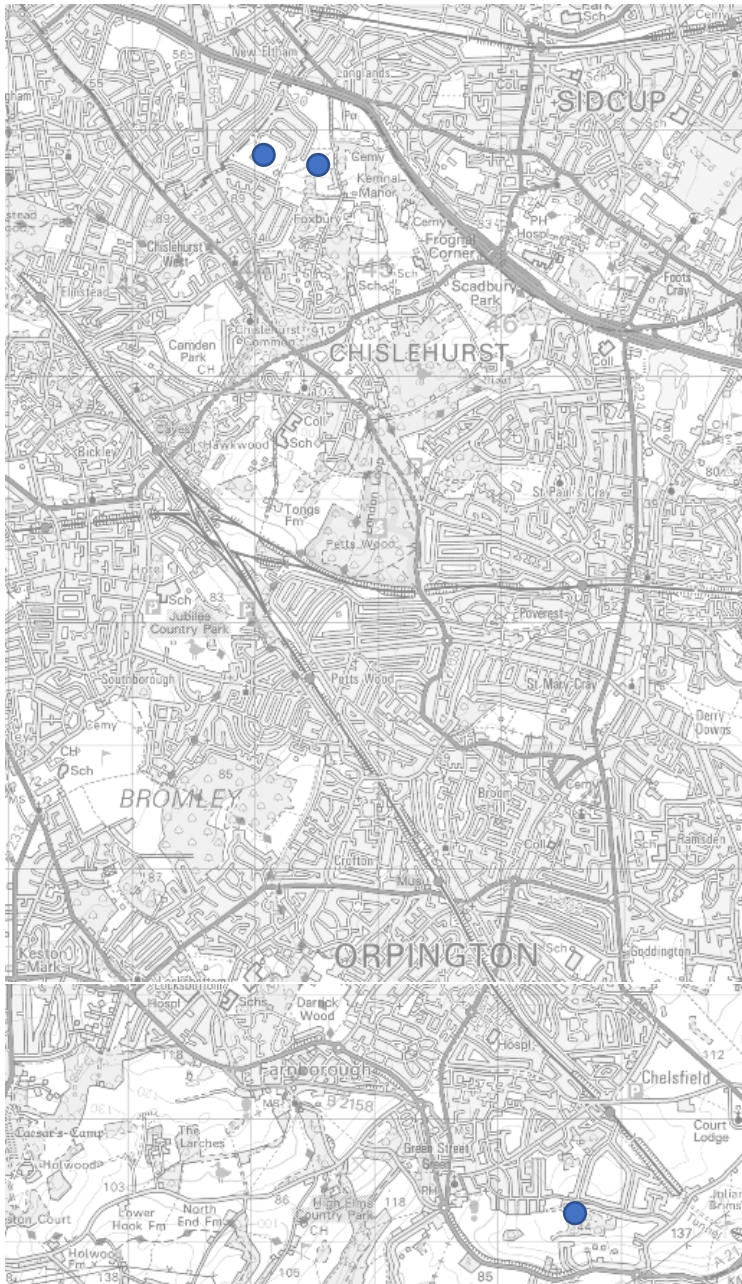
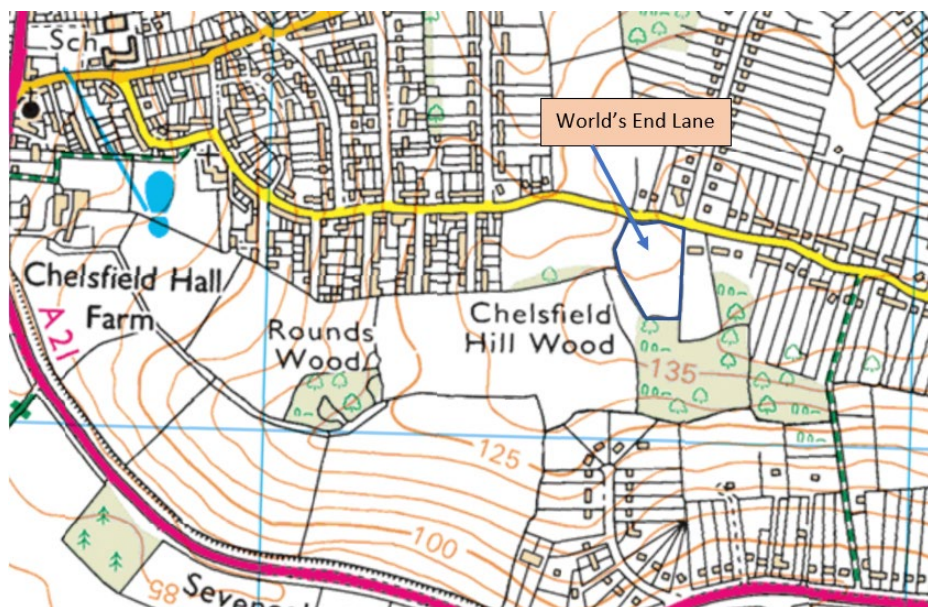


Map 1a Project sites



Map 1b Project sites finescale showing contours and other map features



Map 2b: annotated aerial photos showing landscape features (red = site, green = creation area)

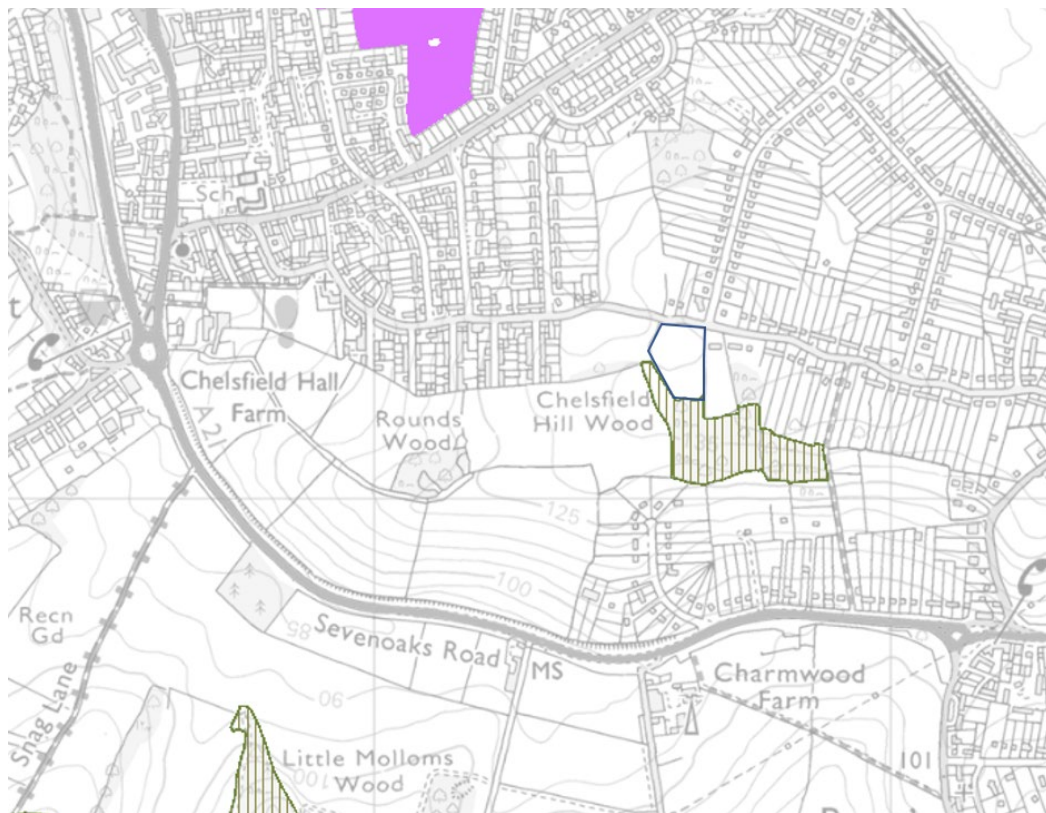
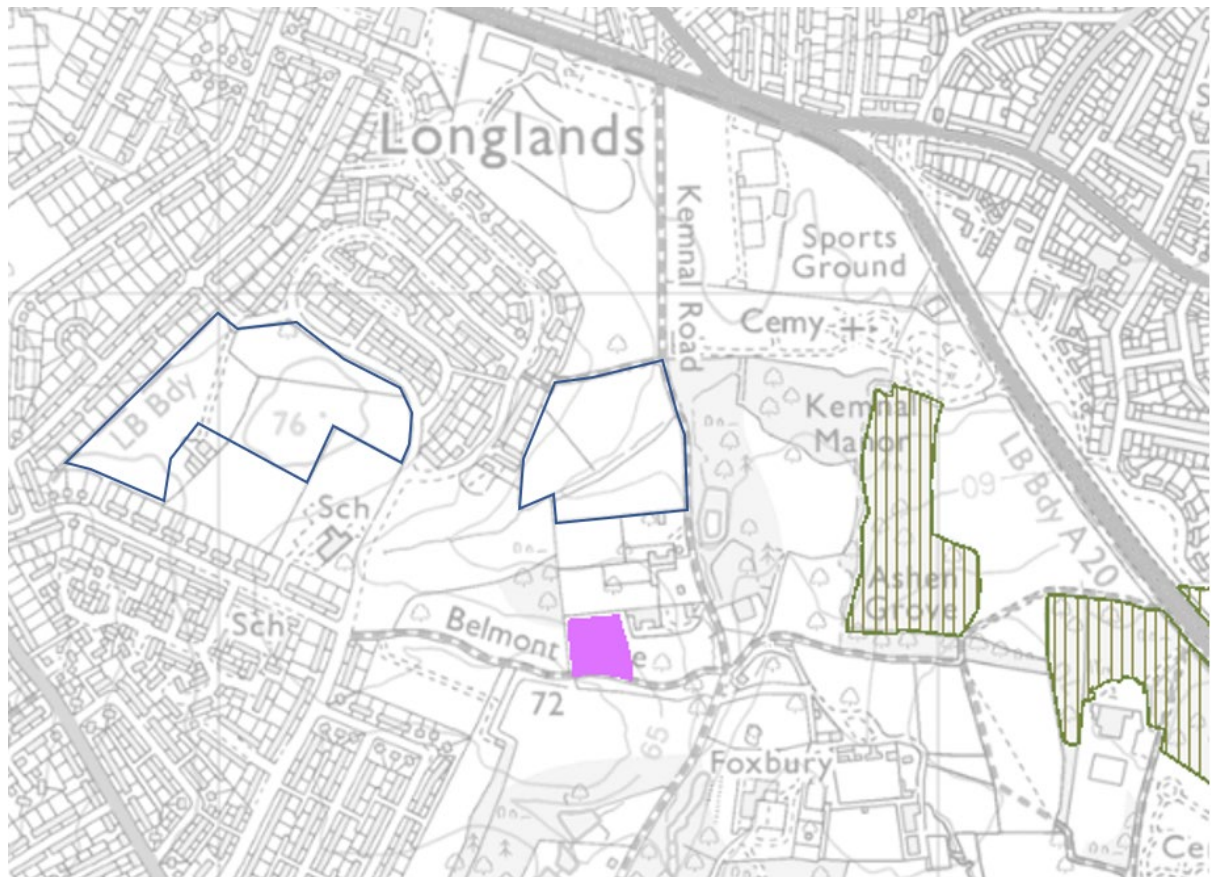


Map 2: location in relation to SAC, SPA, Ramsar.



Nearest (SAC) is Wimbledon Common at 20.5km distant from nearest creation plot.

Map 3: relative locations of priority habitats to project sites

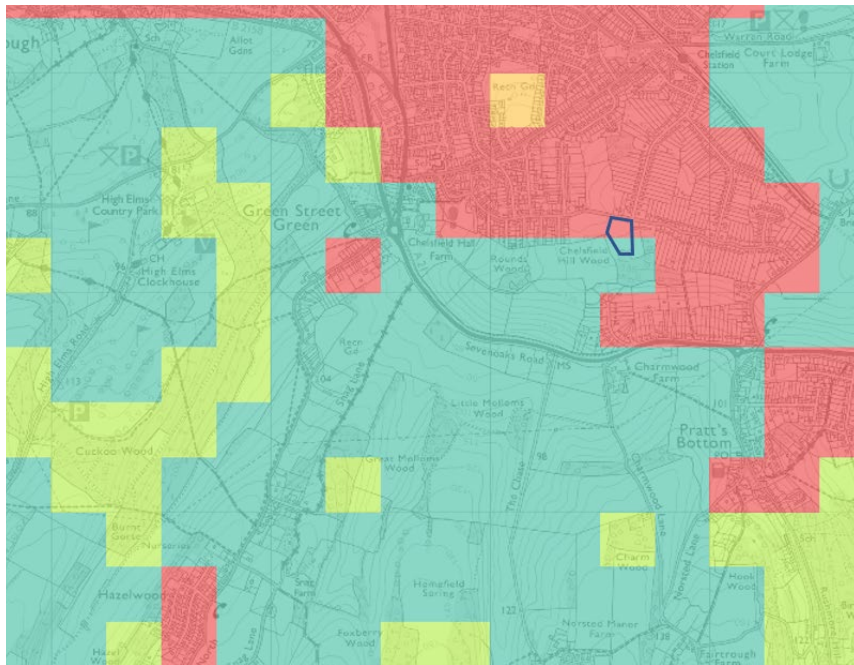
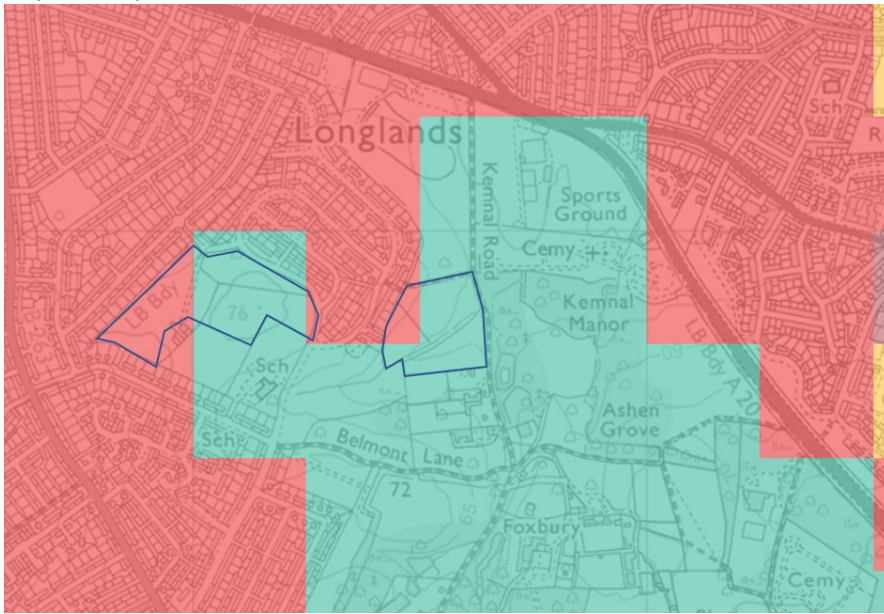


Dark blue outline = project sites

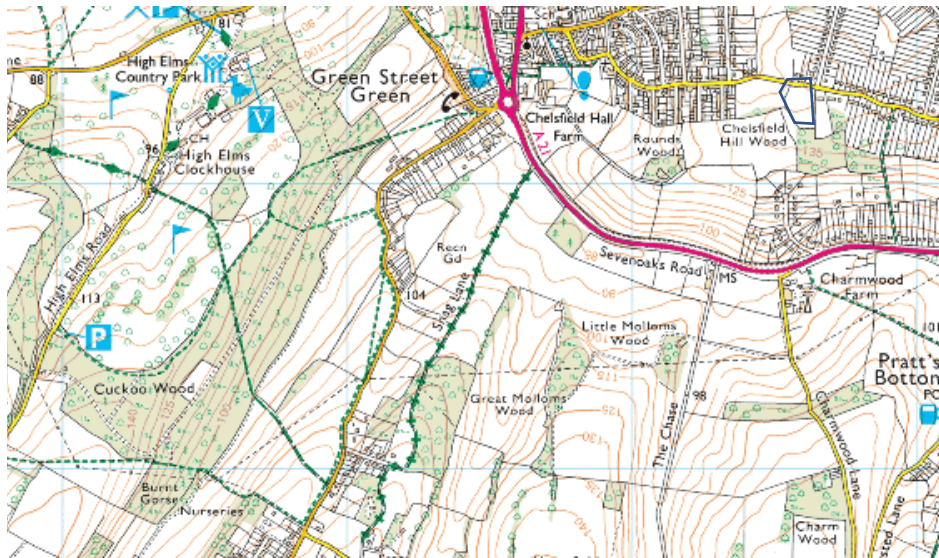
Hatched green = ancient woodland inventory, hatched brown = plantation on ancient woodland

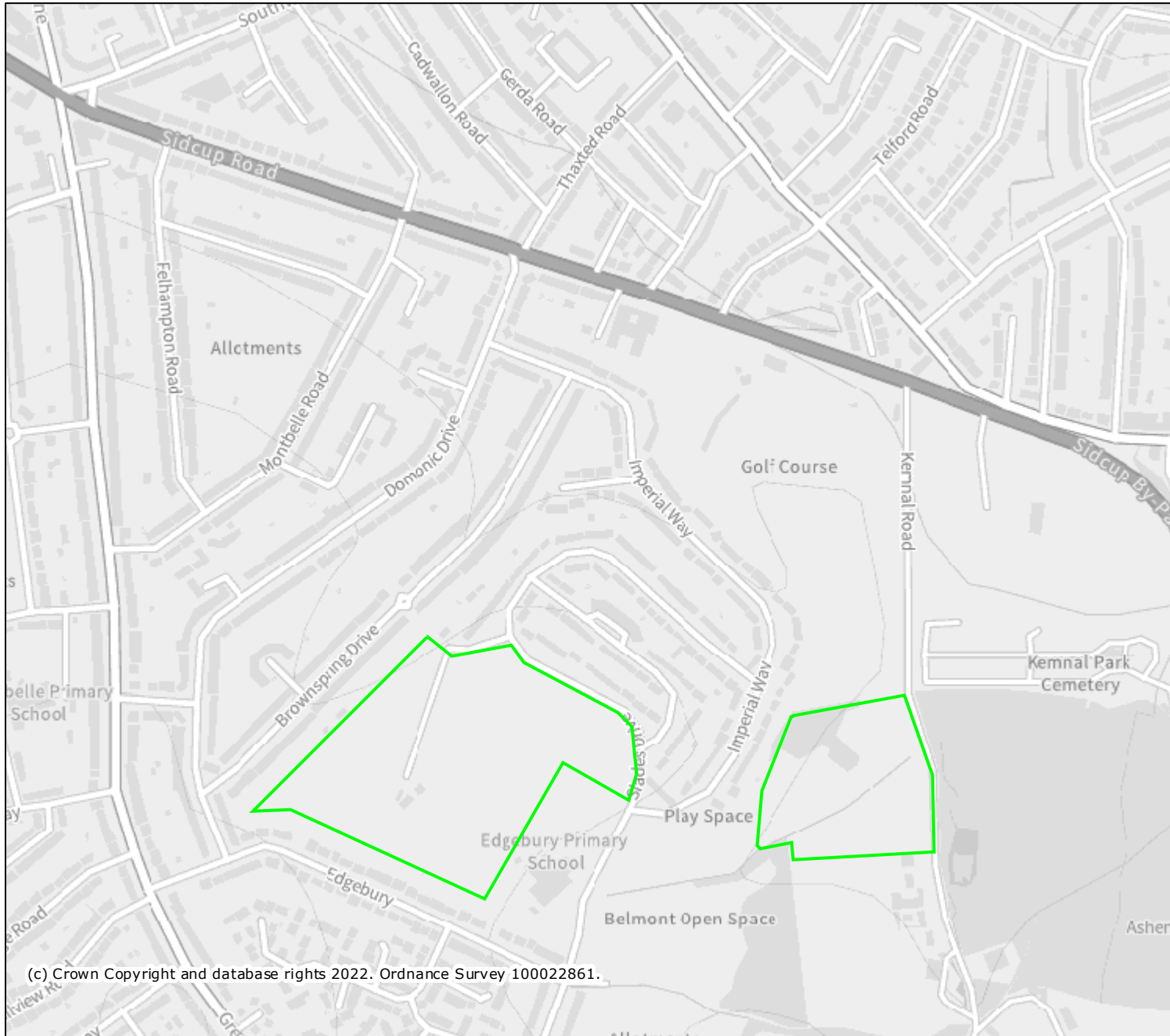
pink = Good quality semi-improved grassland (Non Priority), solid green = lowland calcareous grassland

Map: HCL map






Map: public rights of way in relation to project.



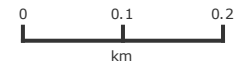


(c) Crown Copyright and database rights 2022. Ordnance Survey 100022861.

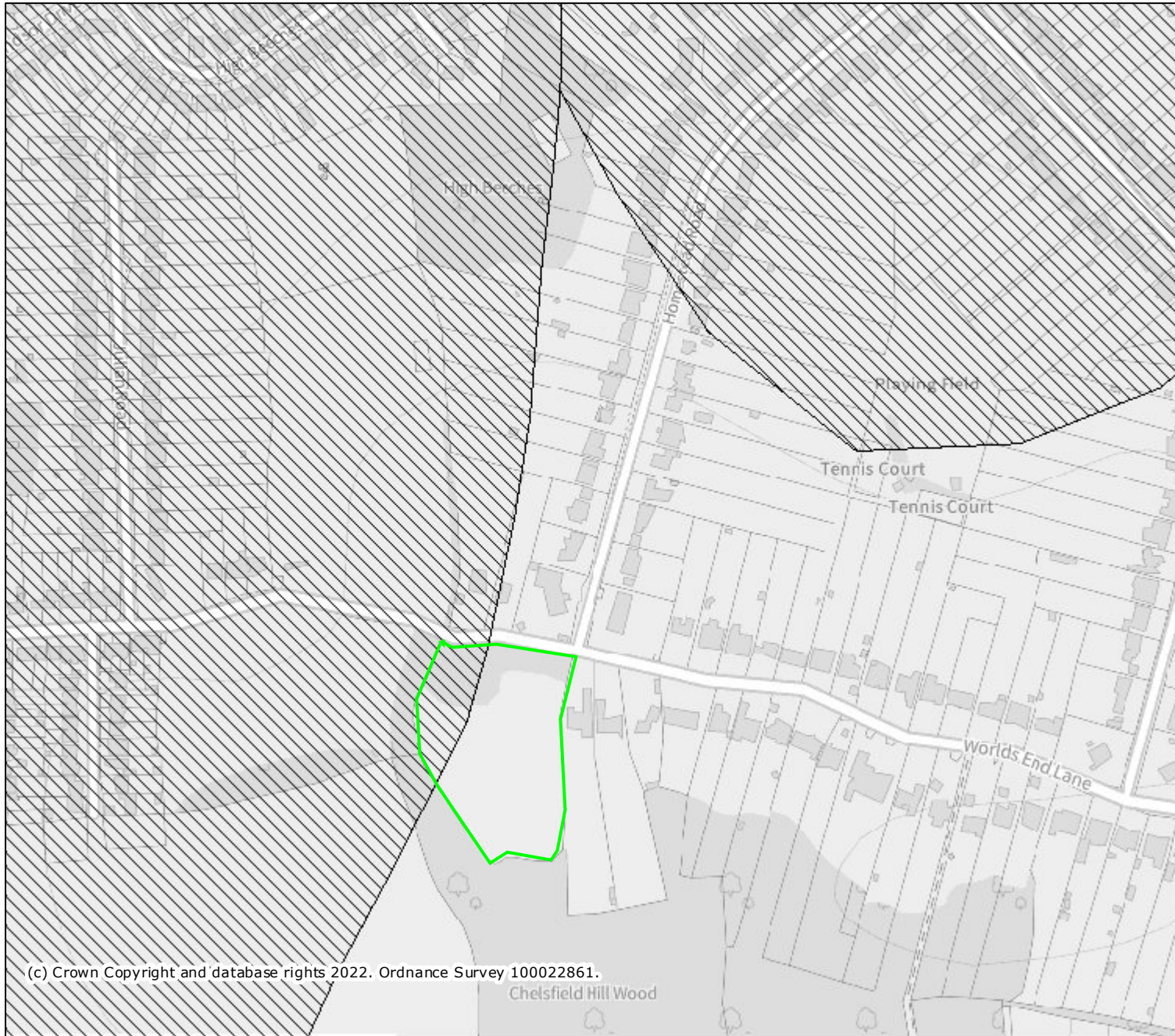
Legend

-  Drinking Water Protected Areas (Surface Water) (England)
-  Drinking Water Safeguard Zones (Surface Water) (England)
-  Drinking Water Safeguard Zones (Groundwater) (England)




Projection = OSGB36
 xmin = 542200
 ymin = 171100
 xmax = 546200
 ymax = 173100



Map produced by MAGiC on 21 April, 2022.
 Copyright resides with the data suppliers and the map must not be reproduced without their permission. Some information in MAGiC is a snapshot of the information that is being maintained or continually updated by the originating organisation. Please refer to the metadata for details as information may be illustrative or representative rather than definitive at this stage.



Legend

-  Drinking Water Protected Areas (Surface Water) (England)
-  Drinking Water Safeguard Zones (Surface Water) (England)
-  Drinking Water Safeguard Zones (Groundwater) (England)

Projection = OSGB36
 xmin = 545600
 ymin = 162900
 xmax = 547700
 ymax = 164000

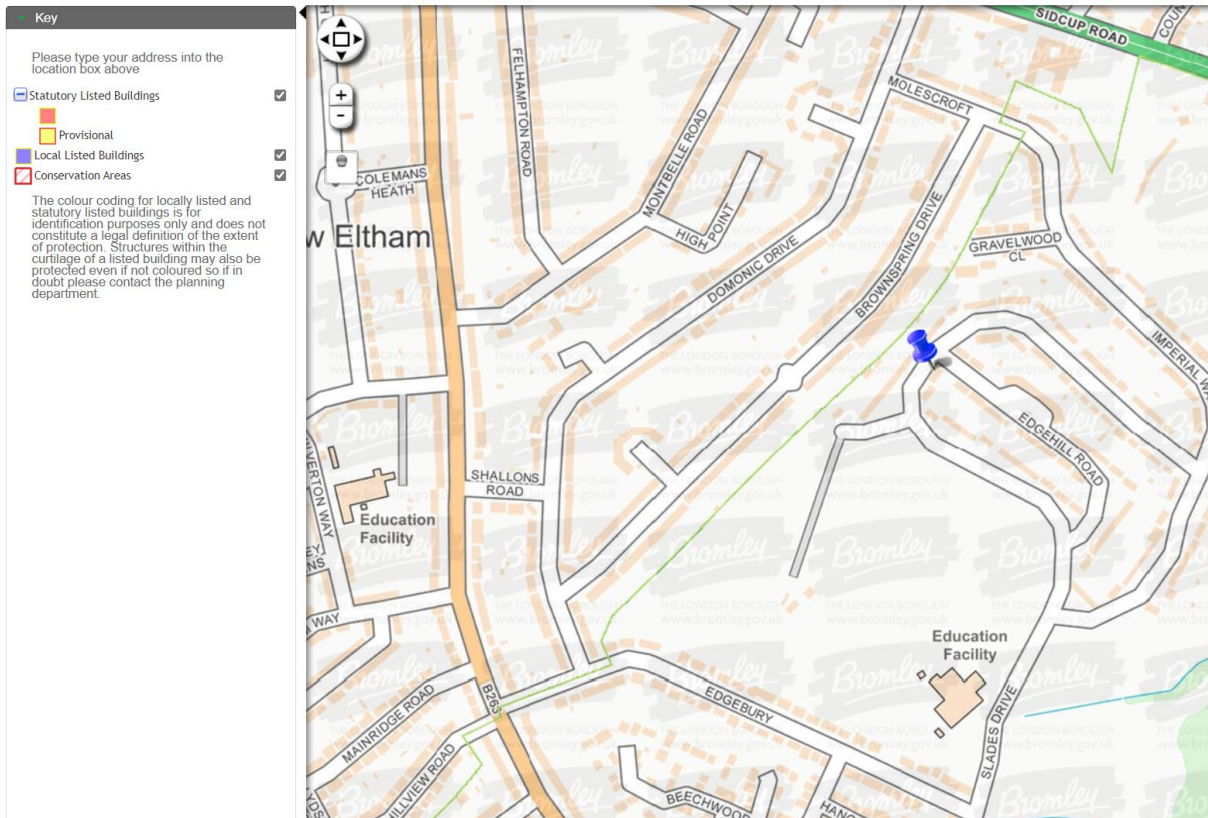


Map produced by MAGIC on 21 April, 2022.
 Copyright resides with the data suppliers and the map must not be reproduced without their permission. Some information in MAGIC is a snapshot of the information that is being maintained or continually updated by the originating organisation. Please refer to the metadata for details as information may be illustrative or representative rather than definitive at this stage.

Non-designated heritage assets recorded within the proposal site, or nearby

Conservation areas and listed buildings

Location:



Conservation areas and listed buildings

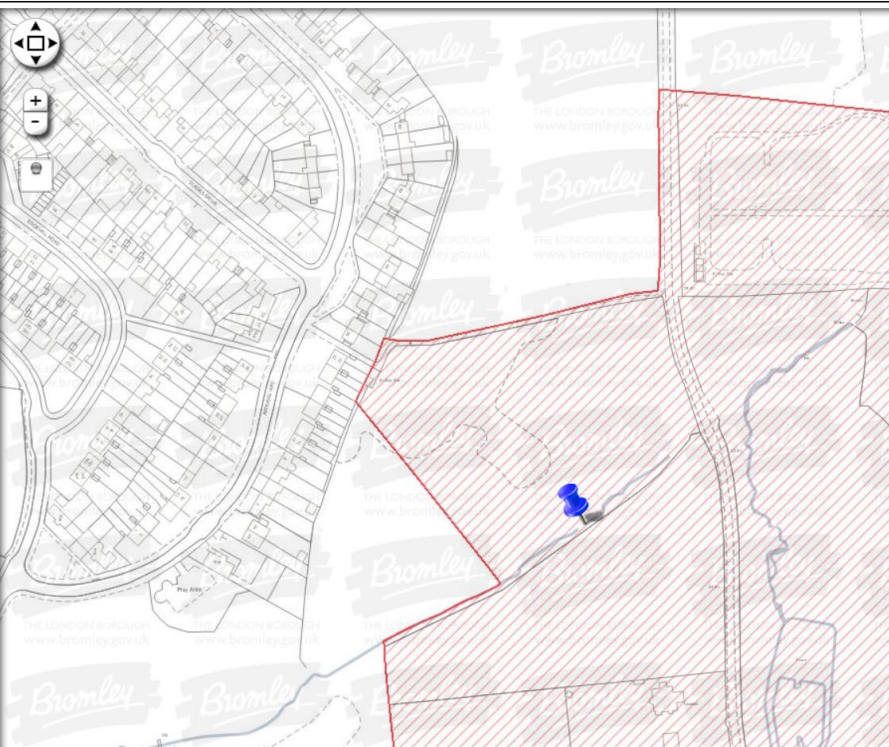
Location: BR7 6JR

Key

Please type your address into the location box above

- Statutory Listed Buildings
- Provisional
- Local Listed Buildings
- Conservation Areas

The colour coding for locally listed and statutory listed buildings is for identification purposes only and does not constitute a legal definition of the extent of protection. Structures within the curtilage of a listed building may also be protected even if not coloured so if in doubt please contact the planning department.



The map displays a street grid in the Kennal area. A large area on the right side is shaded with red diagonal lines, indicating a Conservation Area. A blue pushpin marker is placed on a street within this area. The map includes navigation controls (compass, zoom in/out, and location search) in the top left corner. The background features a watermark for 'THE LONDON BOROUGH OF BROMLEY' and 'www.bromley.gov.uk'.

Conservation areas and listed buildings


Location:

Key

Please type your address into the location box above

- Statutory Listed Buildings
- Provisional
- Local Listed Buildings
- Conservation Areas

The colour coding for locally listed and statutory listed buildings is for identification purposes only and does not constitute a legal definition of the extent of protection. Structures within the curtilage of a listed building may also be protected even if not coloured so if in doubt please contact the planning department.



The map shows a residential street grid in Orpington. A blue pushpin marker is located on '111 B WORLDS END LANE'. The map includes navigation controls (compass, zoom in/out, and location search) in the top left corner. The background features a watermark for 'THE LONDON BOROUGH OF BROMLEY' and 'www.bromley.gov.uk'.